

COMPANY PROFILE —

MOVING FORWARD
TO THE NEW ERA

www.makan-furniture.com

makan



Table of Contents

4	Message From The Ceo
6	Who We Are
8	Our Timeline
10	Our Services
12	New Products
14	Projects Service
20	Production Kinds
22	Warehouse and Logistics
24	ISO Certification
26	Exporting
28	References



SPEECH OF THE CHAIRMAN

Moaz Elsoly

CEO - General Manager

I've started in the career of furniture approximately 20 years ago. Within these years I've been assured that without loving work, absolutely results will be different. The beginning of my own business was very small and simple in a 200 m² factory.

Then, with several obstacles, many difficulties and a lot of hard working, thanks to Allah, we could develop our company to be one of the best factories in furniture manufacturing in Egypt.



Some of precious meanings I've gained through days

- working hands are the secret of success.
- Kindness at work is obligatory.
- Your reputation is more important than money.
- Continuous development is important.
- There are no rights without duties.



WHO WE ARE?

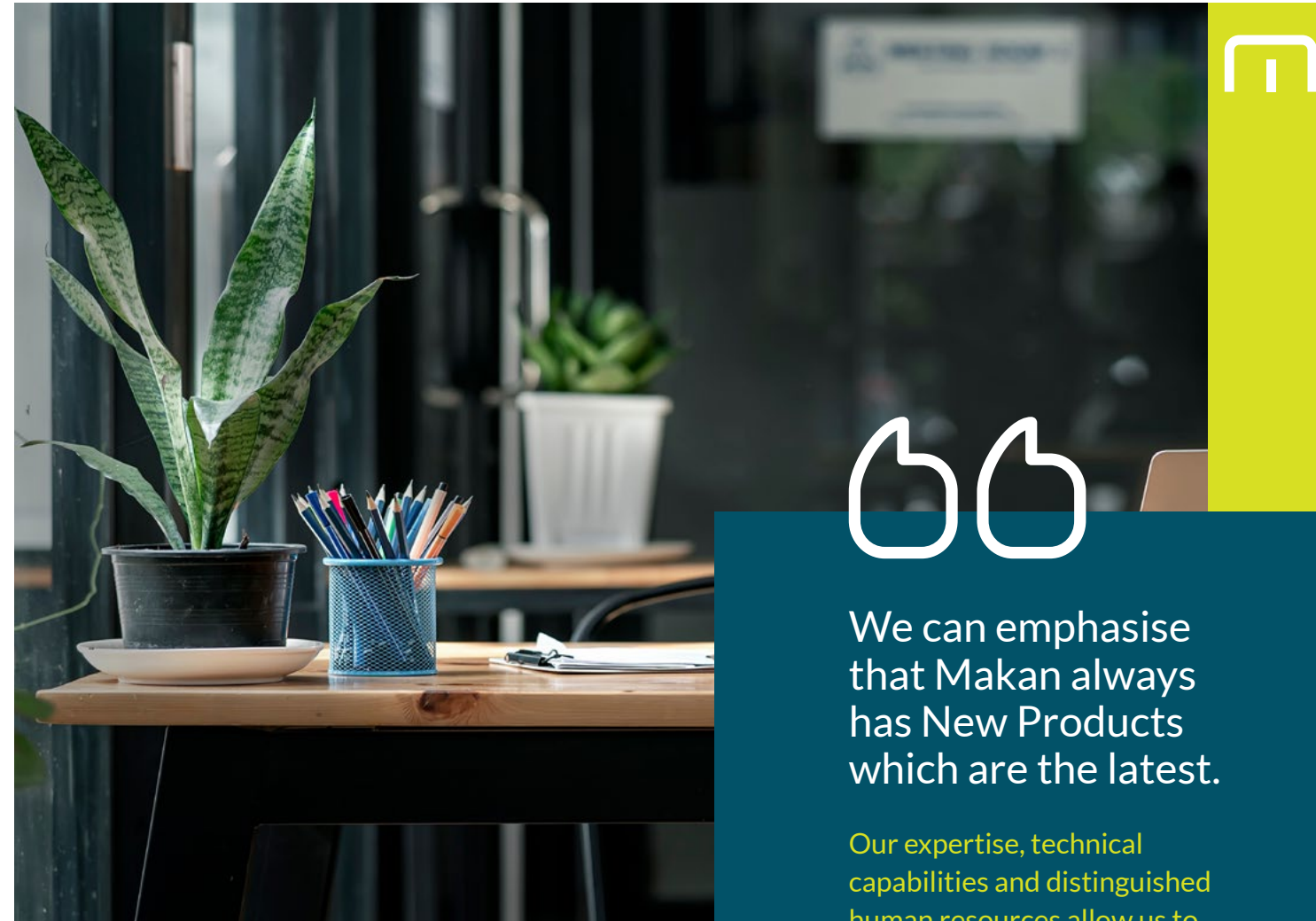
Makan is an Egyptian company established in 2005, Has specialized in interior design, We have a factory of more than 5,000 square meters in the 10th of Ramadan City, and we are currently opening new branches in the Kingdom of Saudi Arabia.

Our Mission

Provide the needs of customers from office and wooden furniture accumulated by quality, experience and wooden technology, In order to maximize the mutual success of each of our partners.

Our Vision

To be the first choice in the field of wooden and office furniture compared to quality, reputation and revenue.



We can emphasise that Makan always has New Products which are the latest.

Our expertise, technical capabilities and distinguished human resources allow us to implement any projects in wood and metal production.



Our Values

01

CUSTOMER SERVICE

We are committed to meet customers' needs by constantly improving our services with a focus on quality and cost.

02

TEAM WORK

All the staff are a part of Team, They are committed to work together through the exchange of ideas, techniques and skills that will enable the company to achieve and sustain growth and profits.

03

INNOVATION AND DEVELOPMENT

We appreciate innovation and initiative to solve problems and develop products to serve the interests of our customers and the company business.

OUR TIMELINE

Makan Company went through many stages until it reached what it is now, due to the management's keenness on continuous development and keeping abreast of the latest technologies in manufacturing.



2005

- Makan Office Furniture
- Workshop 120m²
- Supplier for other showrooms



2015

- Makan Office Furniture
- Factory 1000m²
- Supplier for other showrooms
- Semi automated machines.
- Started to work in new sectors related to Aluminium workstations and partitions.



2018

- Makan For wood and metal industries
- Factory 5000m²
- Head office in the 5th settlement
- Makani Home Furniture
- Showroom Nasr City
- CNC automated machines
- Developed the new sectors
- Started to manufacture metal furniture



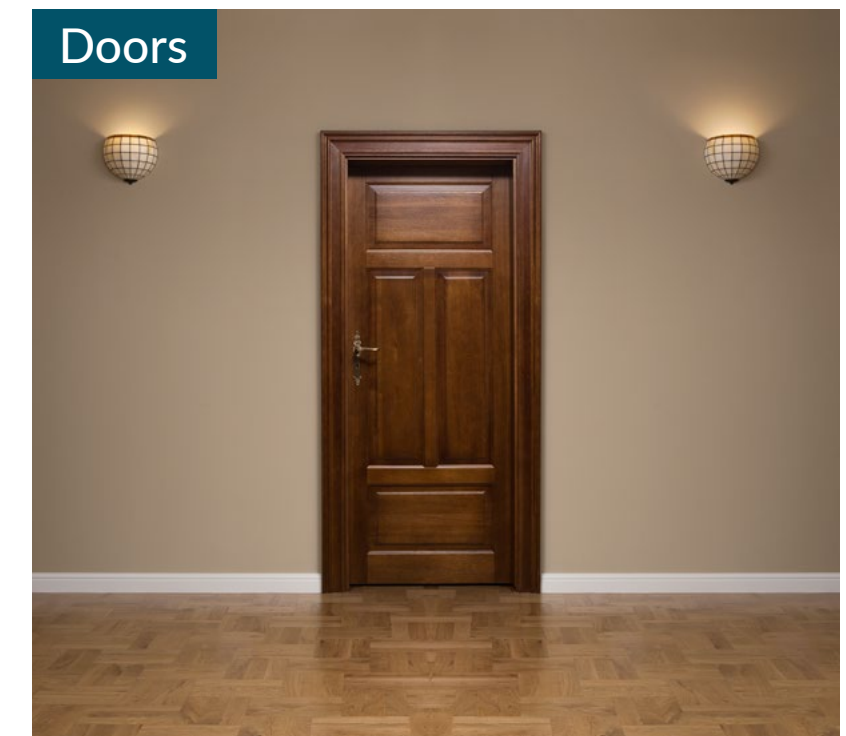
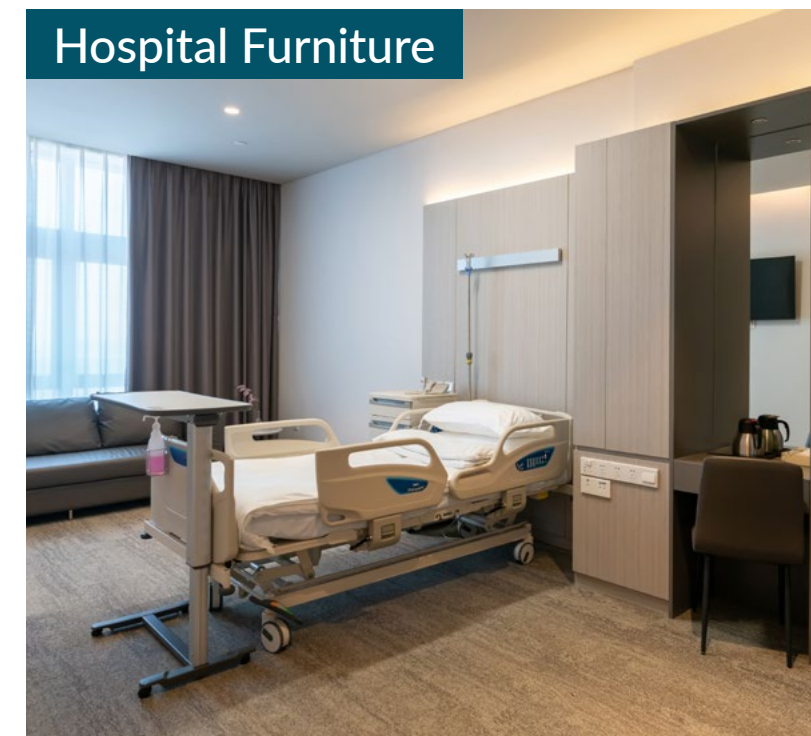
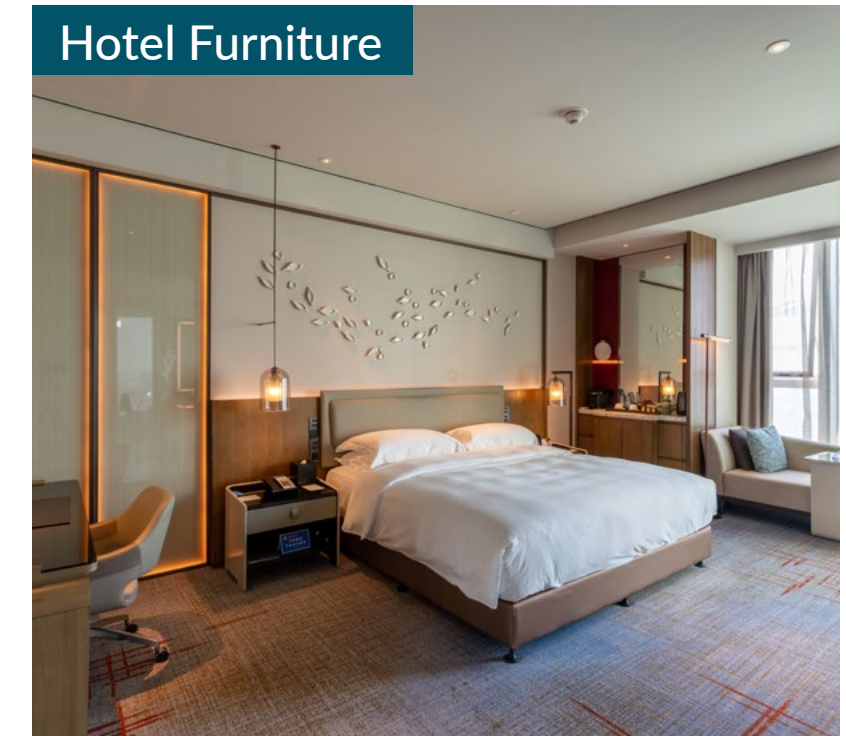
2020

- Makani and Makan For wood and metal industries has been merged and now we have one brand called MAKAN.
- Started to Export to Saudi, and Libya
- Manufactured new products sofa sets, chairs, and solid wood sector

OUR SERVICES

We manufacture wooden and metal products in our factory. We rely on major governmental projects. We work in all specialties related to Furniture's.

- OFFICE FURNITURE
- HOME FURNITURE
- HOTEL FURNITURE
- SCHOOL FURNITURE
- HOSPITAL FURNITURE
- DOORS





NEW PRODUCTS

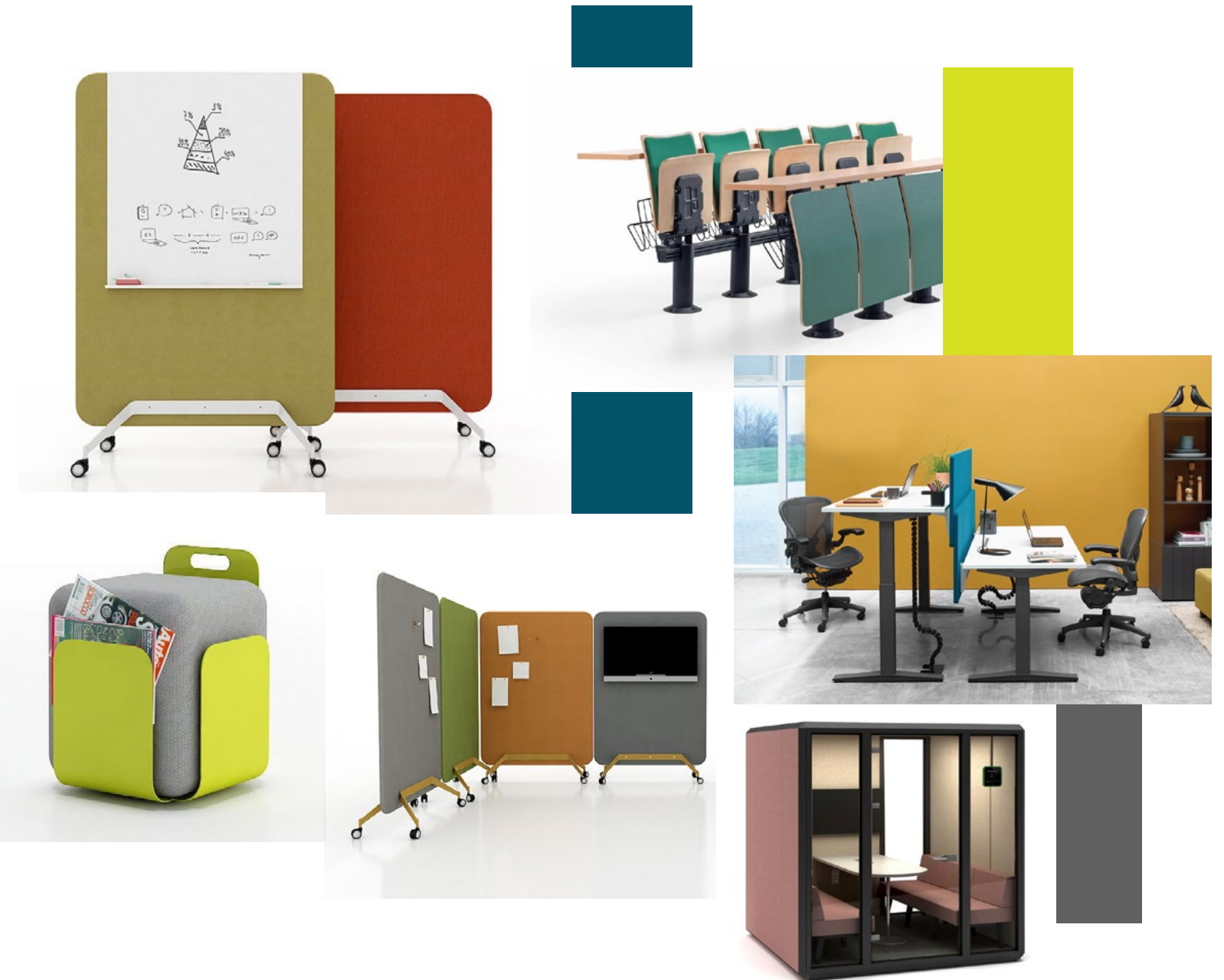
Furniture design needs many requirements to be parade of modernity. So, In Mekan we are always working to achieve these requirements by developing and keeping abreast of everything new in our field.

Therefore, we are keen to attend most exhibitions and furniture fairs in different countries around the world especially those known for their progress in furniture manufacturing like United States, China, Turkey, Italy and Germany.

Through that, we get the latest in everything related to the production of office and home furniture. It also allows us to access and connect with various specialized companies.



Our products are considered one of the latest and most unique in furniture field. A lot of connections and efforts stand behind that excellence.



PROJECT SERVICE

Most projects have preliminary budgets that guide the initial furniture selection process. We can provide you with a budget upon request.

Our process works like this:

- Budgeting: We develop a thorough, comprehensive budget that incorporates any changes made through fine-tuning and/or client input.
- Value engineering: We consider how the costs of certain specification options could impact the budget and determine how we can keep costs low.
- Existing inventory: We provide clients interested in reusing furniture they already own with detailed information on how to manage this process.
- Careful documentation: We meticulously track and document any changes made during the course of a project to enable easy and accurate reconciliation when the project wraps up.



DELIVERING HIGH QUALITY PRODUCTS

is not the only thing we can do for you. We offer professional project management and can support projects at every stage. We are able to run “tailor-made” projects and optimise our customers’ costs by smart planning, as well as by taking a holistic approach to every project.



LOW MAINTENANCE

Another advantage of using Melamine sheets is that they are extremely easy to clean. Their smooth surface makes cleaning easier when compared with other rigid textured surfaces like that of hardwood. Melamine is best suited for low impact applications such as store fixtures and office furniture. The finish is consistent and removal of dirt is almost effortless. The surface material's resistance to strong solvents and water further simplifies the process of maintenance.

AFFORDABILITY

Melamine is cost effective and due to the reduced factory manufacturing involved, which makes it much cheaper when compared to other types of laminates. Durability and performance are qualities that make melamine laminates great value for money. Melamine laminates make luxurious interiors accessible to everyone.

AF- FORD- ABILI- TY



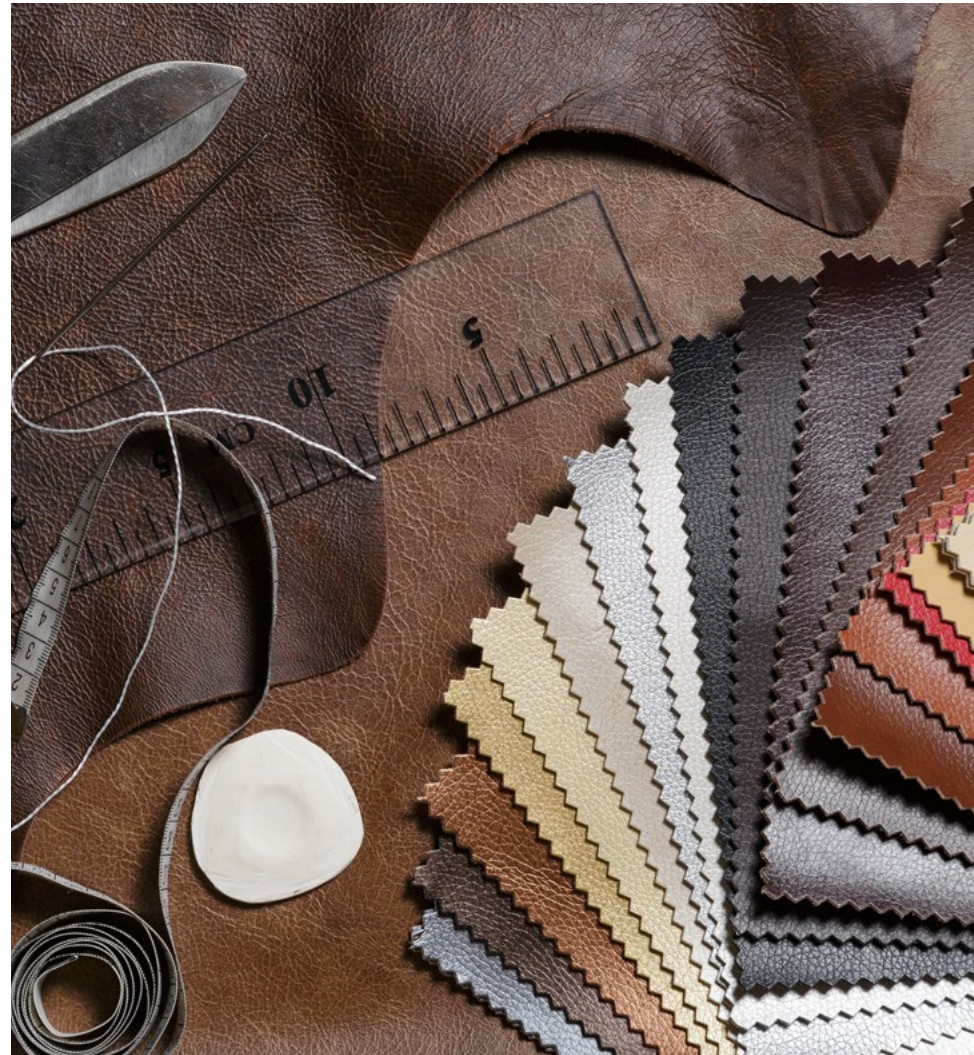
HIGH PERFORMANCE

Apart from being crack, abrasion, and scratch resistant, melamine laminates can also withstand humid weather conditions. They can replicate any design and their colour translation is excellent. The laminates are stain resistant and designed for coarse usage. Melamine laminates can be easily coordinated with matching HPL and other surfacing solutions. They are ideal for office spaces, kitchen cabinets, furniture, and shelves.

PER- FOR- MANCE



One of the advantages of melamine boards is that it has different types of texture to give each customer the feeling he wants in his product.



WIDE CHOICES

Melamine laminates come in a variety of colours and textures. The availability of melamine across various colours, patterns, and textures is a real game changer for property owners, architects, and designers. Greenlam Industries offers melamine laminates for a variety of applications such as household and office furniture, cabinets, and dry erase boards. These are used in both residential and commercial settings.



PRODUCTION KINDS

All these departments are present in Makan, where it allows the manufacture of all kinds of industrial and natural furniture with high quality.

We have different sectors and departments in the factory show that Makan has the capabilities to implement projects with high quality and in record time. So that we can satisfy our customers.

01 LAMINATE WOOD SECTION

- Edge band

Mainly done to cover plywood sides in order to match a cabinet's finished look, but it also protects the inner plywood from possibly warping. Edge Banding is available in variety of materials, but there are two categories that are most commonly used: PVC and Veneer.

- Boring and curved board

CNC machines can make large-scale parts out of wood, which would be impossible for a desktop 3D printer. The ability of a CNC router or mill to create large-scale parts isn't this technology's only advantage. Milling parts out of wood allows makers to retain the wood's natural beauty and strength.

- Cutting boards

Cutting boards Horizontal beam saws are designed for the précised cutting of wood based panel materials as well as plastics, plaster and fiber boards, insulation materials, nonferrous metals; even steel. This type of machine is able to cut very precisely as well as very efficiently with high output. The work pieces can be cut either individually as single sheets or as so called books of panels (several sheets on top of each other).

02 ALUMINUM SECTION

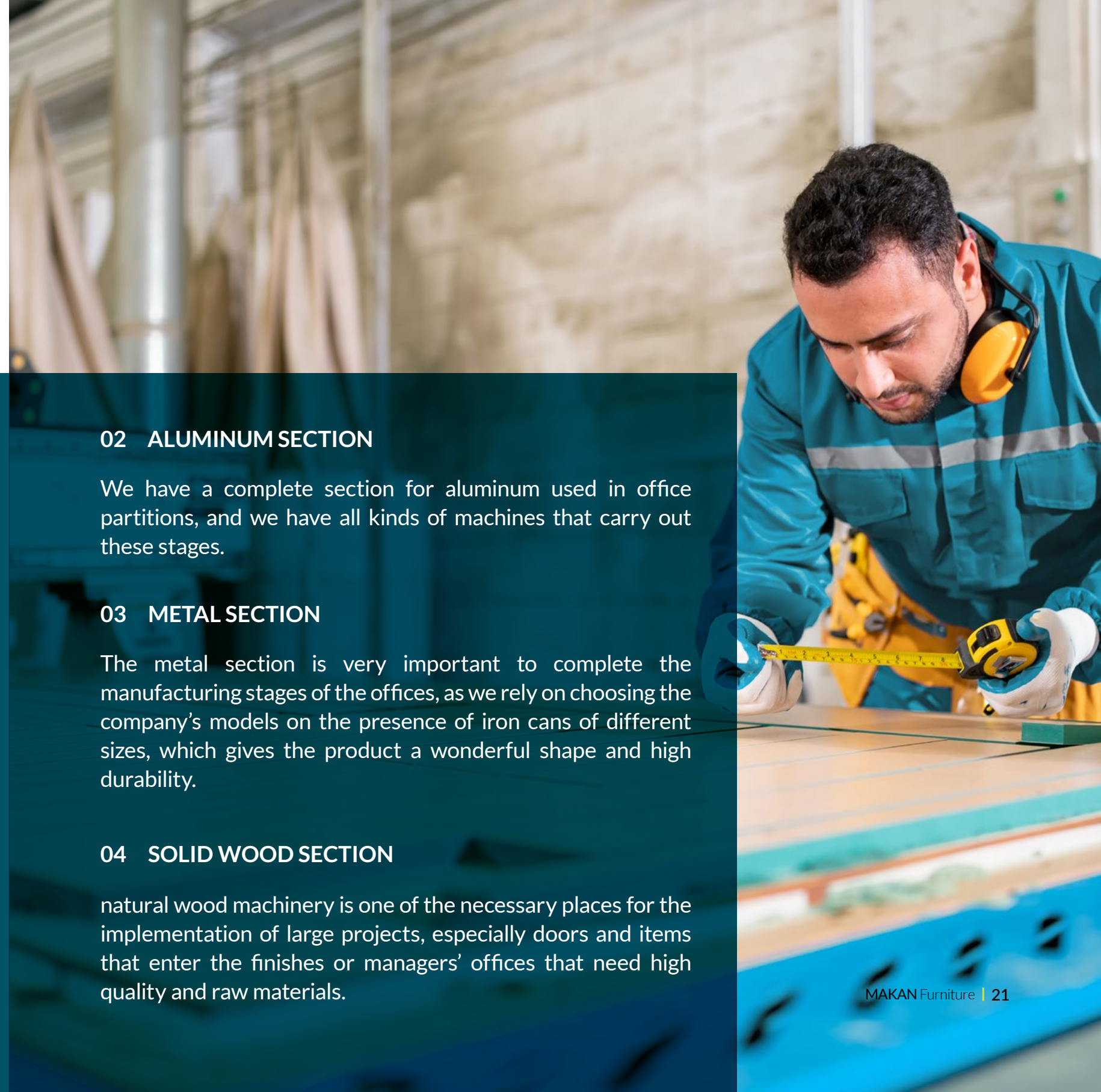
We have a complete section for aluminum used in office partitions, and we have all kinds of machines that carry out these stages.

03 METAL SECTION

The metal section is very important to complete the manufacturing stages of the offices, as we rely on choosing the company's models on the presence of iron cans of different sizes, which gives the product a wonderful shape and high durability.

04 SOLID WOOD SECTION

natural wood machinery is one of the necessary places for the implementation of large projects, especially doors and items that enter the finishes or managers' offices that need high quality and raw materials.



WAREHOUSE AND RAW MATERIALS

Wood is one of the raw materials that need protection when stored, even if it is a final product. Therefore, we have such a kinds of storage that maintains the level of quality of raw materials and the final product, our warehouses are your supply chain pit-stop, expertly designed to keep your products flowing through the supply chain at a pace of your choosing. Lean, efficient and highly compliant with a host of value-added services.



INSTALLATIONS AND LOGISTICS

Perfectly complementing our warehouses, take advantage of our extensive distribution network for product deliveries to end customer; whether it be wholesaler, retail store or end-consumer. We are set up to cater for Full Truck Loads and installation anywhere.



The warehouse department deals with the odoo system for warehouses, it relies on coding items so that raw materials and products can be identified easily.

Our technicians are well trained so they knows that time is very important and customer satisfaction is the most important thing.

ISO CERTIFICATION

We are seeking to obtain ISO certificates that qualify us to compete in global markets.



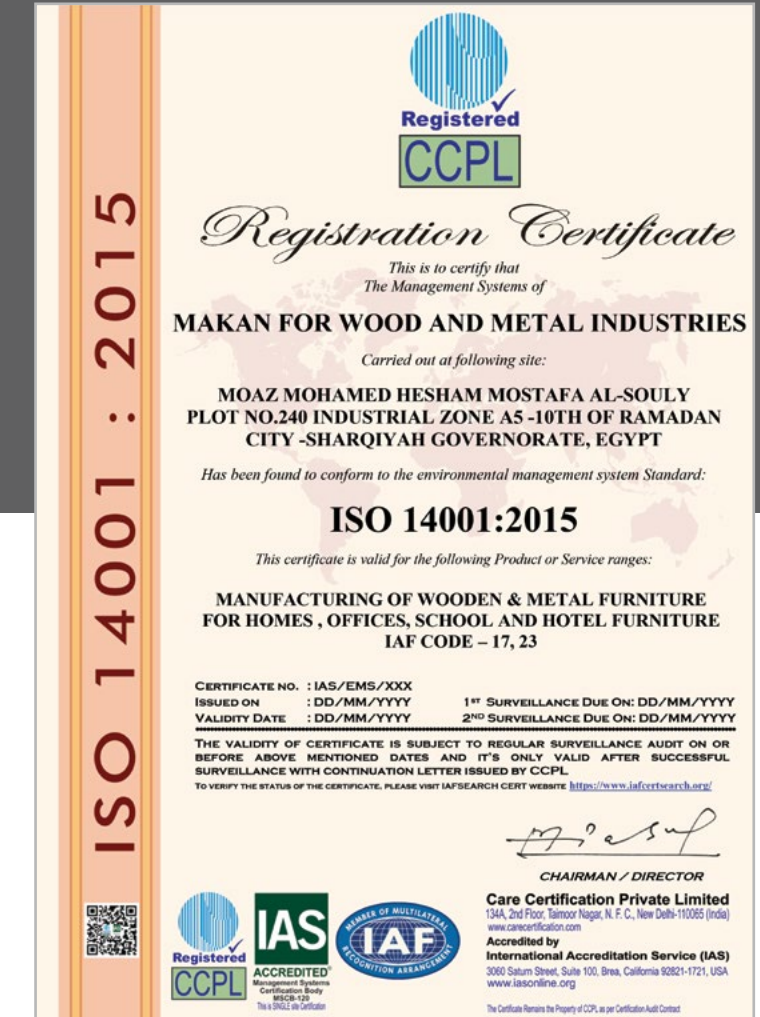
Makan is interested in continuous development through participation in government entities and international institutions, that help factories to develop and help them obtain the necessary certificates that help us to export and reach the quality of our products to the highest levels and give our customers confidence in our company.



ISO 9001 Certificate of Registration



ISO 45001 Certificate of Registration



ISO 14001 Certificate of Registration

WE ARE EXPORTING TO MENA REGION

The Arab Republic of Egypt is distinguished by its geographical location and the international agreements that it concluded in the world, especially the agreement of the League of Arab States and the COMESA agreement, which allows export from Egypt without any customs on the Egyptian product. Which helped us start exporting to some countries, the most important of which are Saudi Arabia, Libya and Kenya. As the Makan company has exported to Saudi Arabia melamine bedrooms with good quality and reasonable price.



EX- PORT

REFERENCES AND CLIENTS



Proud to work with you, and you're meaning a lot to us.

We care about all our customers, whether the volume of dealing. Makan Company has a good relationship with all customers, so you are our partners in success



Government Sector

Ministry of production
Ministry of Foreign Affairs
Ministry of Interior Affairs
Ministry of Environment

Investment Sector

Majid Al Futtaim
Alexandria Agricultural Lamar
El Mohandes Insurance
Abu Ghaly Motors
Century Group for Real Estate
Marketing
Ofar Seas Shipping
AL-sheikh Motors
Garden City Company
Green Egypt
Egyptian Trade and Agencies
Abuhata
Centro Global Solutions
for Communications and
Information Technology
Asma for trade
Asma Marin
Al Malik for Trade and

Distribution Group

Banking Sector

Egypt Bank
National bank of Kuwait
CIB Bank
Abu Dhabi Islamic Bank
Audi Bank
Barclays Bank
Al-Ahly Bank

Construction Sector

ZCC Contracting and
Construction
Style Design for projects
Integrated contracting
services
Union for real estate and
tourism development
Middle East Contracting
Kps
Atrim Contracting and
Specialized Works
ACBS
Egyptian Engineering &

Commercial Projects Quality
Alakhtyar for contracting and
real estate investment
Golden Pyramids Plaza
City Stars for real estate
management and consultancy
OptionTravel
New Urban Communities
Authority
Tenth of Ramadan City
Development Authority
El Shorouk City Development
Agency
Obour City Development
Agency
New Obour City Development
Agency
New Cairo City Development
Authority
Nubaria City Development
Authority
Tourism Villages Development
Authority
New Minya City Development
Agency



West Qena New City
 Development Agency
 May 15th City Development
 Agency
 New Alamein City
 Development Authority
 New Capital City
 Development Authority
 New Form
 Tabrouk Development - Sodic
 Roots for landscaping
 Atco Wood Industries
 ways design
 Egykan Real Estate
 Development
 Egypt for Government
 Technology Services - E-Serve
 Dar Al Khebra Real Estate
 Investment - Reed
 Nile Valley
 Engineering Company
 for Construction and
 Development
 Tri star
 Engineering forma

University & School Sector

Suez University
 British University
 Sadat University

Al Azhar University
 Cairo University
 Institute of Technology
 European University
 Al-Talaih School
 International School

Electronics Sector

LG of Electronics
 Tree Ed Digital Solutions
 Fawry
 Magentis IT Services
 Global Consulting and
 Information Systems
 Telecom Egypt
 I Cool Live
 Smart Electrical Industries
 National Technology
 Comprehensive software
 Al Tayseer Electronics
 Mood Stone
 Arkan
 SAB Arabia
 Pan Arab Integation Vision
 Al Raed Information Systems
 ALM accounts
 C.C.T Egypt
 Elite Business Solutions
 Smart Cards Factory
 Smart

National Security Building

Energy Sector

Taqa
 Nile Valley Gas - Energy
 Master Gas - energy
 Oil Sarwa
 TCL Summer Chemical

Clubs Sector

Nile Sports
 Club Roaya

Hotels Sectors

Majestic Hotels
 Semiramis Hotel
 Hilton Taba Hotel
 Hilton Sharm El Sheikh Hotel

International institutions and associations

IFAD
 UNDP
 OM Habiba

Different Companies

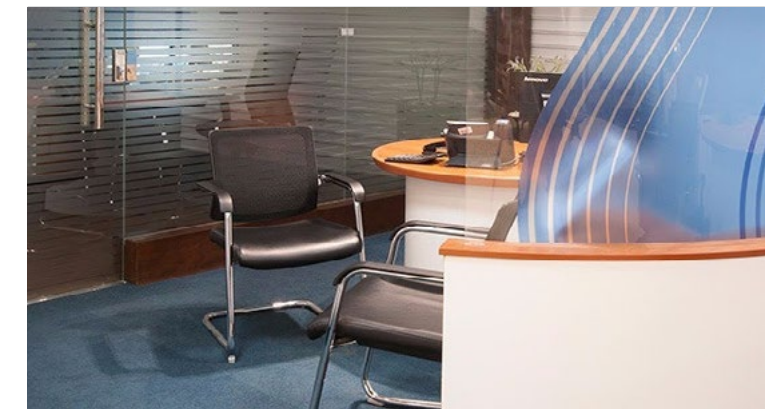
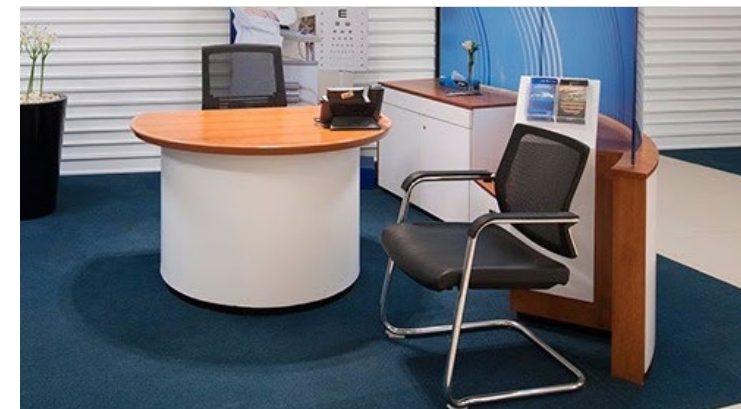
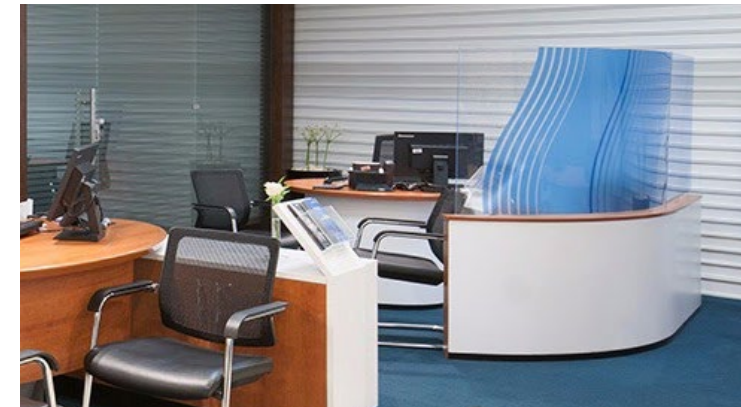
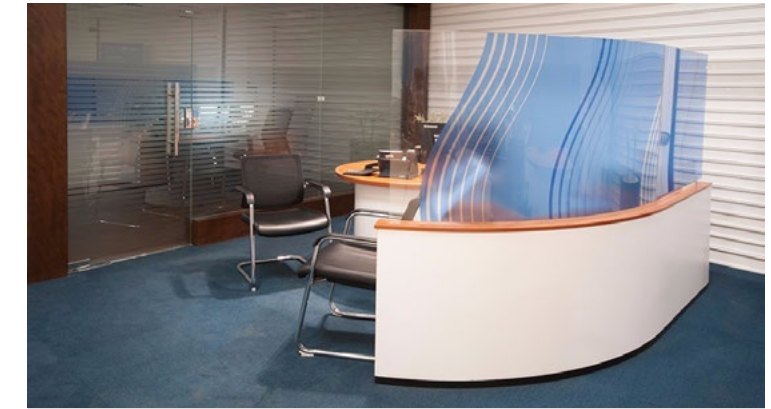
Safeer Publishing
 hostile to sports
 General Star
 The Front

Fine Sleek
 Royal Lab
 SQS
 Egyptian Compressed Air
 Technology
 Fugro
 Development of
 microenterprise services
 Hiv Studio
 Egyptian post
 Alexandria Library
 CMS
 Arabic luster
 Fast Garments
 Hijaz Tourism
 Al-Mohr for Cars Trade &
 Import - Abou Ghaly
 Shira for Trade and Agencies
 Commercial project specialists
 Ideal for processed tobacco
 The National Authority for
 Spending
 SH Chemical
 Global Trading
 SWIFT
 ENPPI Petroleum
 National Defense Council
 Tamkeen
 The first micro-enterprise
 Coptic Museum

General Intelligence Building
 Nestle
 Shipping company and
 shipping agencies (ZDS)
 Centro
 Marood
 European Women's
 Association
 Egyptian Import San Masr
 Petroleum Company
 REGUS
 Arabic Treading For
 Contracting Campany (ATIC)
 Buffo Studio
 Safety Storage
 United Group Egypt
 Global Trax Factory
 BIG Medical Factory

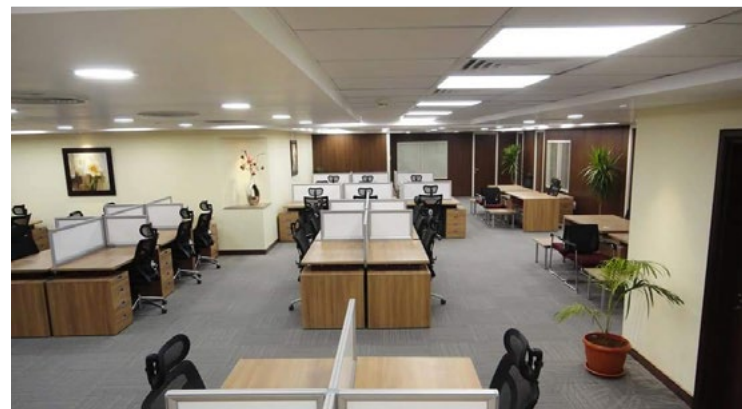
REFERENCES FOR SOME PROJECTS WE DID BEFORE

Abu Dhabi Islamic Bank



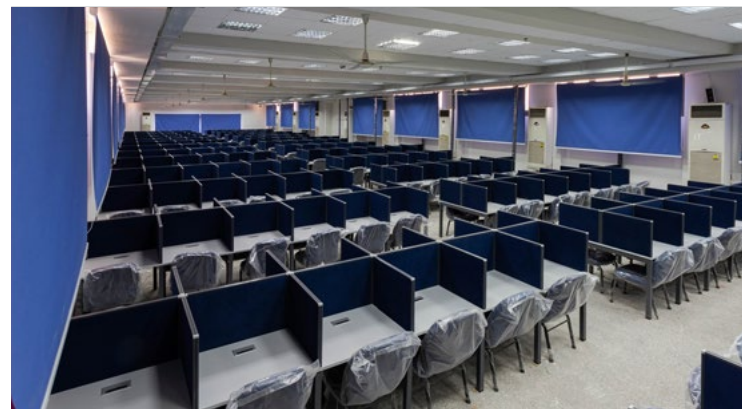
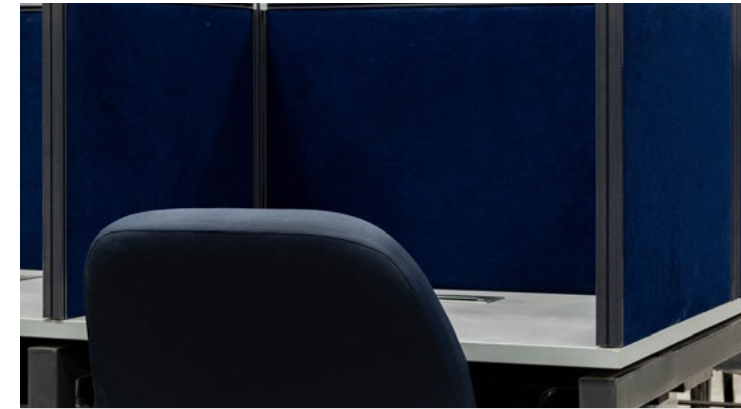
REFERENCES FOR SOME PROJECTS WE DID BEFORE

Bank Misr



REFERENCES FOR SOME PROJECTS WE DID BEFORE

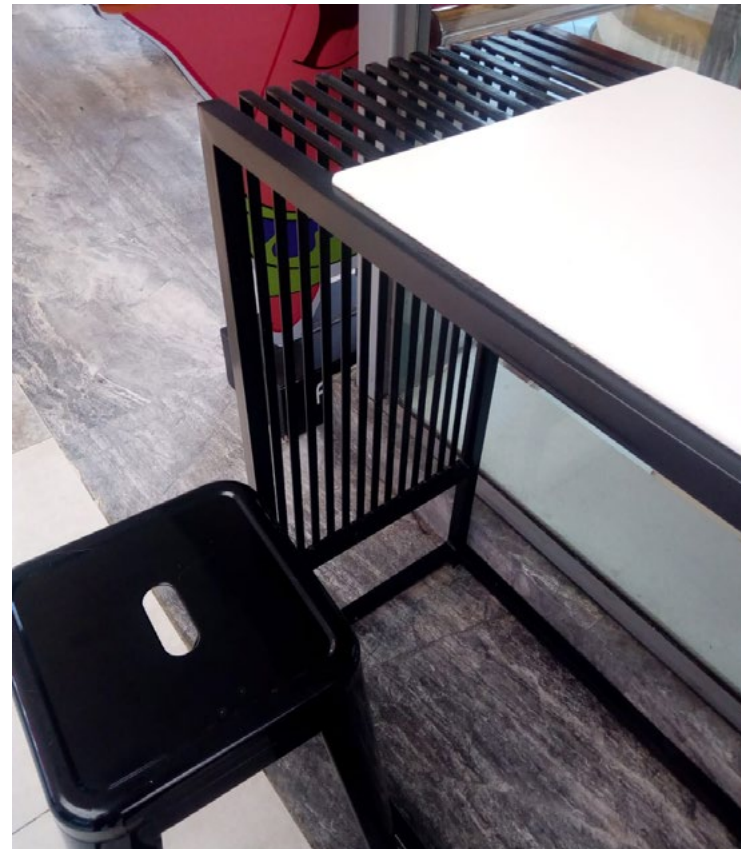
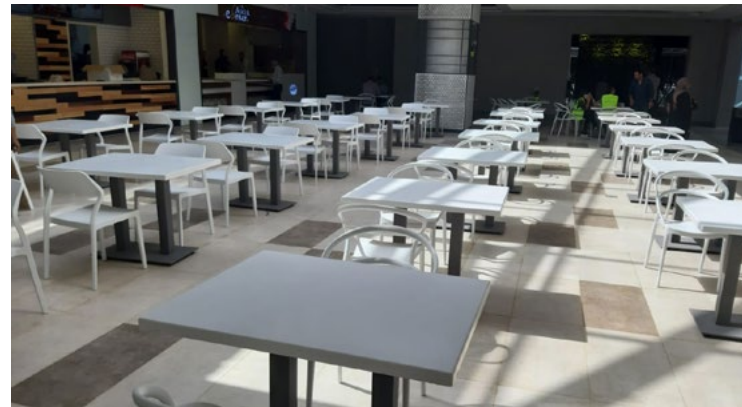
Cairo University



REFERENCES FOR SOME PROJECTS WE DID BEFORE

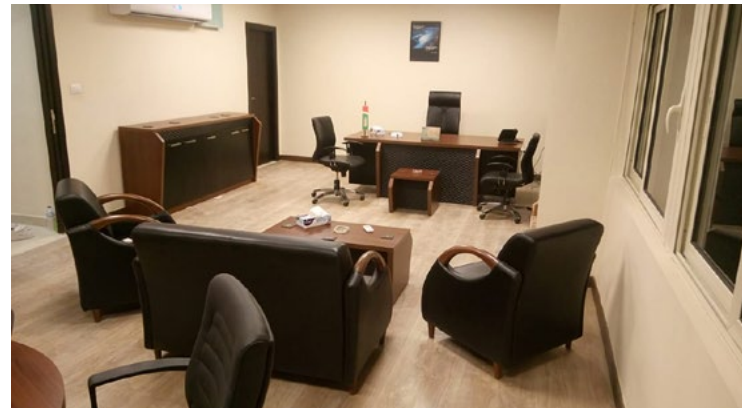
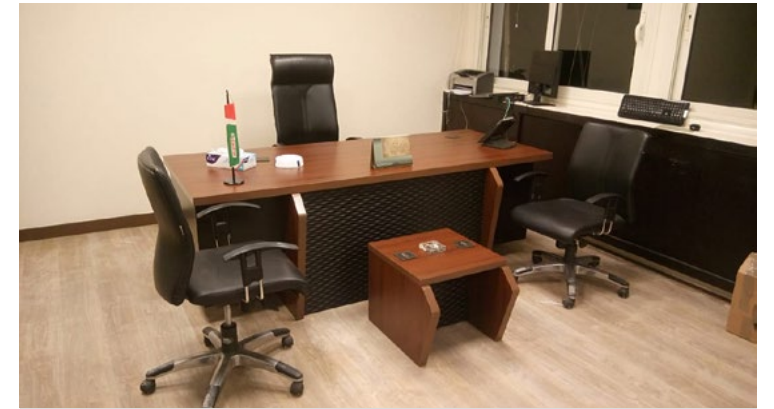
City Stars

CITYSTARS[®]
HELIOPOLIS



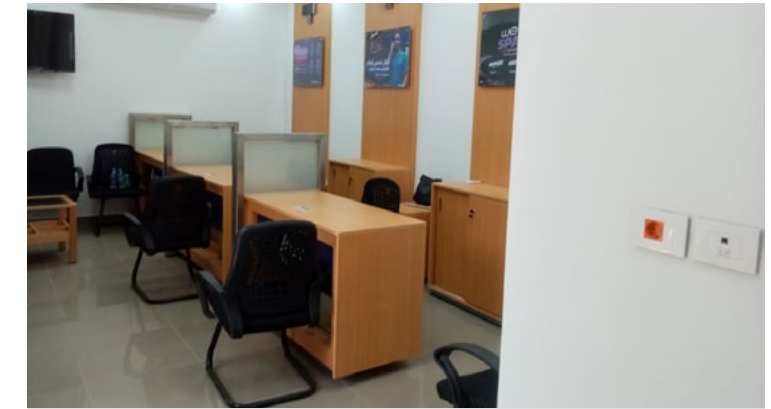
REFERENCES FOR SOME PROJECTS WE DID BEFORE

Taqa Arabia



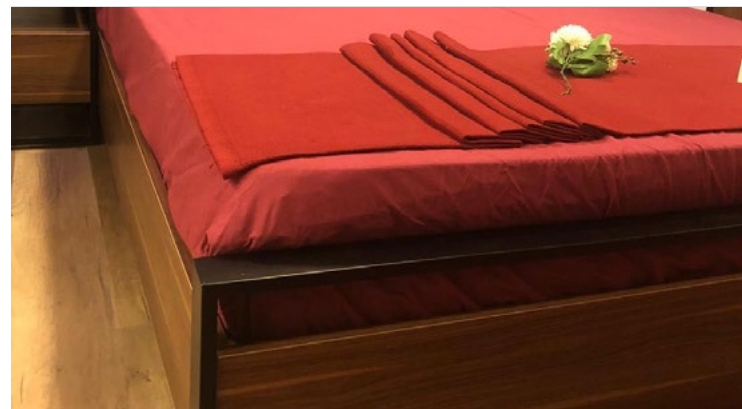
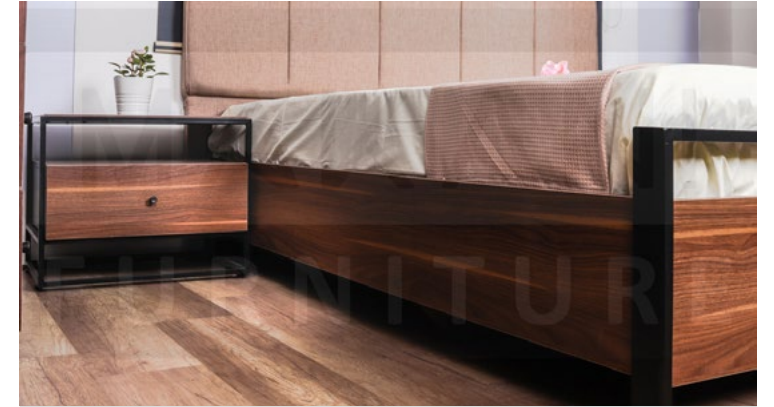
REFERENCES FOR SOME PROJECTS WE DID BEFORE

WE Telecom Egypt



REFERENCES FOR SOME PROJECTS WE DID BEFORE

Bed Rooms



The logo for Makan Furniture, featuring the word "makan" in a stylized, lowercase font with a thin underline, and the word "FURNITURE" in a smaller, uppercase font directly below it.

makan
FURNITURE

info@makan-furniture.com
www.makan-furniture.com

Head Office

Zaker Huissen St., 7th Zone,
Nasr city, Egypt.
+20 223 847 601

Factory

Industrial Compount, A5,
10th of Ramadan city, Egypt.
+20 55 441 133 6

